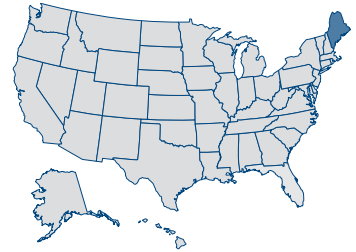


Maine

19 Economic Performance Rank, 2010

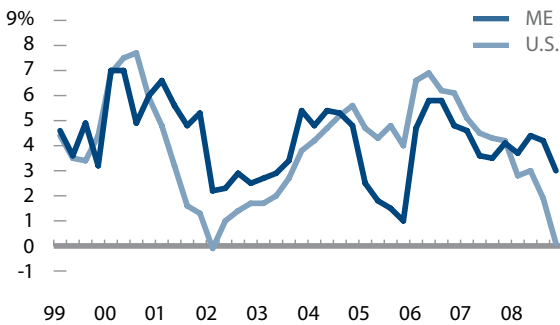
44 Economic Outlook Rank, 2010



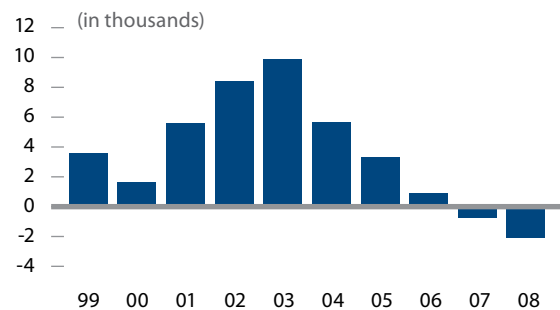
Economic Performance Rank (1=best 50=worst)
 A historical measure based on a state's performance (equally weighted average) in the three important performance variables shown below. These variables are highly influenced by state policy.

Economic Outlook Rank (1=best 50=worst)
 A forecast based on a state's standing (equally weighted average) in the 15 important state policy variables shown below. Data reflect state + local rates and revenues and any effect of federal deductibility.

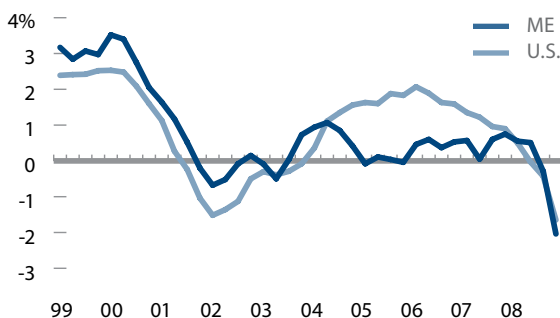
Personal Income Per Capita Cumulative Growth 1998-2008 **48.2%** **Rank: 21**



Absolute Domestic Migration Cumulative 1999-2008 **36,260** **Rank: 21**



Non-Farm Payroll Employment Cumulative Growth 1998-2008 **8.2%** **Rank: 25**



Historical Ranking Comparison 2008 **46** 2009 **47**
ECONOMIC OUTLOOK RANK

Variable	Data	Rank
Top Marginal Personal Income Tax Rate	8.50%	43
Top Marginal Corporate Income Tax Rate	8.93%	39
Personal Income Tax Progressivity (change in tax liability per \$1,000 of income)	\$18.36	46
Property Tax Burden (per \$1,000 of personal income)	\$45.50	45
Sales Tax Burden (per \$1,000 of personal income)	\$23.31	21
Remaining Tax Burden (per \$1,000 of personal income)	\$21.35	36
Estate/Inheritance Tax Levied?	Yes	50
Recently Legislated Tax Changes (2008 & 2009, per \$1,000 of personal income)	-\$3.65	7
Debt Service as a Share of Tax Revenue	6.2%	10
Public Employees Per 10,000 of Population (full-time equivalent)	593.5	37
State Liability System Survey (tort litigation treatment, judicial impartiality, etc.)	69.3	3
State Minimum Wage (federal floor is \$7.25)	\$7.25	1
Average Workers' Compensation Costs (per \$100 of payroll)	\$3.04	45
Right-to-Work State? (option to join or support a union)	No	50
Number of Tax or Expenditure Limits (0= least/worst, 3=most/best)	1	13