

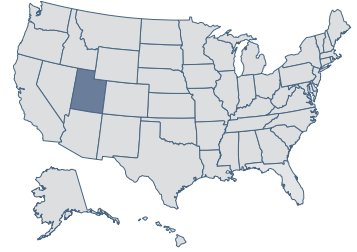
Utah

22

Economic Performance
Rank: 2009

1

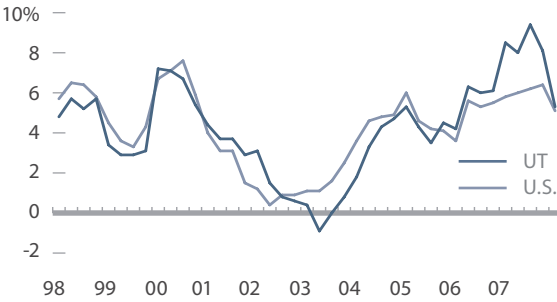
Economic Outlook
Rank: 2009



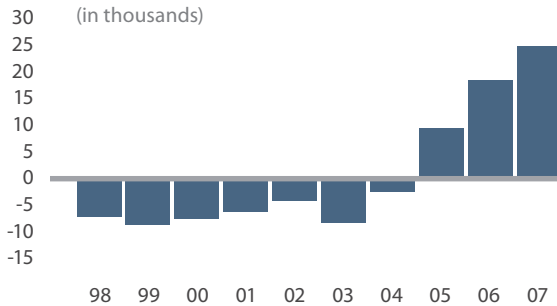
Economic Performance Rank (1=best 50=worst)

A historical measure based on a state's performance (equally weighted average) in the three important performance variables shown below. These variables are highly influenced by state policy.

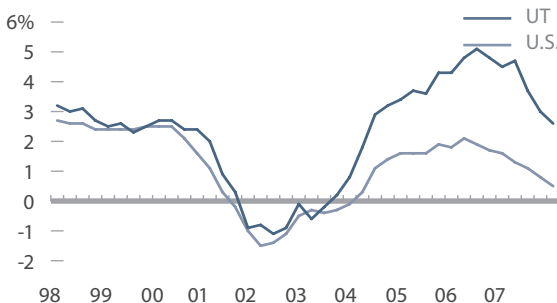
Personal Income Per Capita Cumulative Growth 1997-2007 **45.6% Rank: 43**



Absolute Domestic Migration Cumulative 1998-2007 **8,446 Rank: 23**



Non-Farm Payroll Employment Cumulative Growth 1997-2007 **25.9% Rank: 5**



Economic Outlook Rank (1=best 50=worst)

A forecast based on a state's standing (equally weighted average) in the 15 important state policy variables shown below. Data reflect state + local rates and revenues and any effect of federal deductibility.

Historical Ranking Comparison 2008 ECONOMIC OUTLOOK RANK



Variable	Data	Rank
Top Marginal Personal Income Tax Rate	5.00%	17
Top Marginal Corporate Income Tax Rate	5.00%	8
Personal Income Tax Progressivity (change in tax liability per \$1,000 of income)	\$0.00	2
Property Tax Burden (per \$1,000 of personal income)	\$25.81	13
Sales Tax Burden (per \$1,000 of personal income)	\$26.38	38
Remaining Tax Burden (per \$1,000 of personal income)	\$16.62	17
Estate/Inheritance Tax Levied?	No	1
Recently Legislated Tax Changes (2007 & 2008, per \$1,000 of personal income)	-\$0.98	12
Debt Service as a Share of Tax Revenue	8.2%	33
Public Employees Per 10,000 of Population (full-time equivalent)	498.2	6
State Liability System Survey (tort litigation treatment, judicial impartiality, etc.)	68.6	5
State Minimum Wage (federal floor is \$6.55)	\$6.55	1
Average Workers' Compensation Costs (per \$100 of payroll)	\$1.63	6
Right-to-Work State? (option to join or support a union)	Yes	1
Number of Tax or Expenditure Limits (0= least/worst, 3=most/best)	1	13