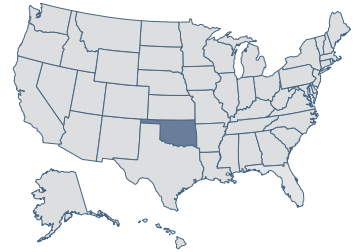


Oklahoma

12 Economic Performance
Rank: 2009

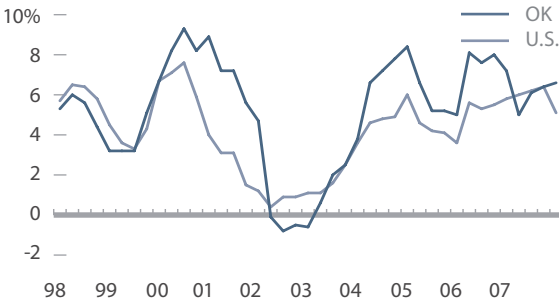
15 Economic Outlook
Rank: 2009



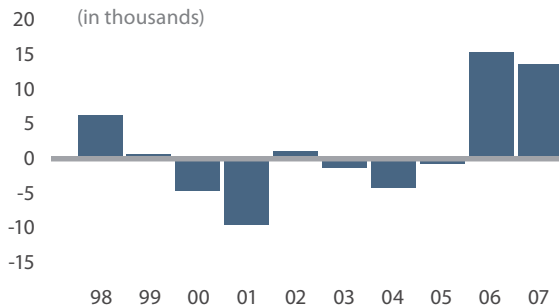
Economic Performance Rank (1=best 50=worst)

A historical measure based on a state's performance (equally weighted average) in the three important performance variables shown below. These variables are highly influenced by state policy.

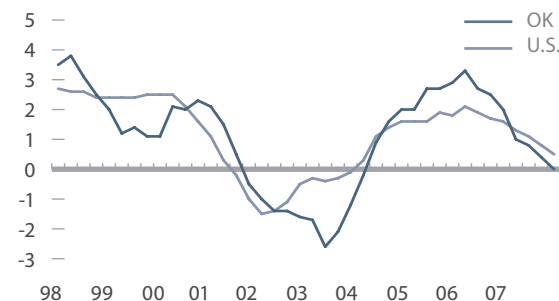
Personal Income Per Capita Cumulative Growth 1997-2007 **69.3%** **Rank: 4**



Absolute Domestic Migration Cumulative 1998-2007 **16,553** **Rank: 22**



Non-Farm Payroll Employment Cumulative Growth 1997-2007 **11.9%** **Rank: 26**



Economic Outlook Rank (1=best 50=worst)

A forecast based on a state's standing (equally weighted average) in the 15 important state policy variables shown below. Data reflect state + local rates and revenues and any effect of federal deductibility.

Historical Ranking Comparison
2008 ECONOMIC OUTLOOK RANK

14

Variable	Data	Rank
Top Marginal Personal Income Tax Rate	5.50%	22
Top Marginal Corporate Income Tax Rate	6.00%	15
Personal Income Tax Progressivity (change in tax liability per \$1,000 of income)	\$5.84	22
Property Tax Burden (per \$1,000 of personal income)	\$16.09	2
Sales Tax Burden (per \$1,000 of personal income)	\$23.81	33
Remaining Tax Burden (per \$1,000 of personal income)	\$18.04	23
Estate/Inheritance Tax Levied?	Yes	50
Recently Legislated Tax Changes (2007 & 2008, per \$1,000 of personal income)	-\$1.36	10
Debt Service as a Share of Tax Revenue	7.1%	21
Public Employees Per 10,000 of Population (full-time equivalent)	595.7	37
State Liability System Survey (tort litigation treatment, judicial impartiality, etc.)	64.2	17
State Minimum Wage (federal floor is \$6.55)	\$6.55	1
Average Workers' Compensation Costs (per \$100 of payroll)	\$2.89	41
Right-to-Work State? (option to join or support a union)	Yes	1
Number of Tax or Expenditure Limits (0= least/worst, 3=most/best)	2	4