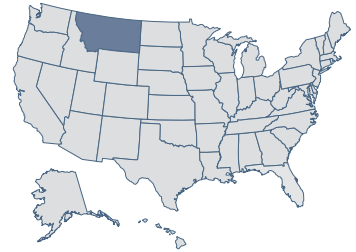


Montana

4 Economic Performance
Rank: 2009

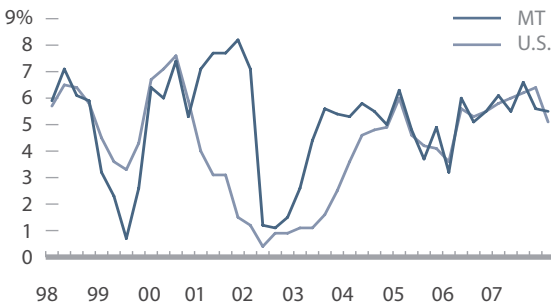
30 Economic Outlook
Rank: 2009



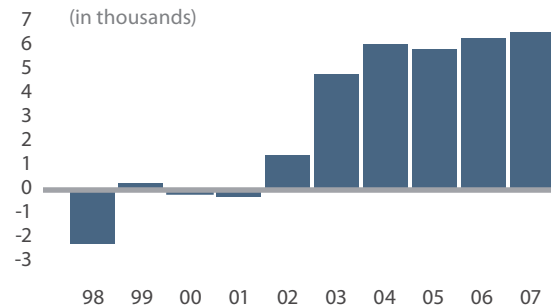
Economic Performance Rank (1=best 50=worst)

A historical measure based on a state's performance (equally weighted average) in the three important performance variables shown below. These variables are highly influenced by state policy.

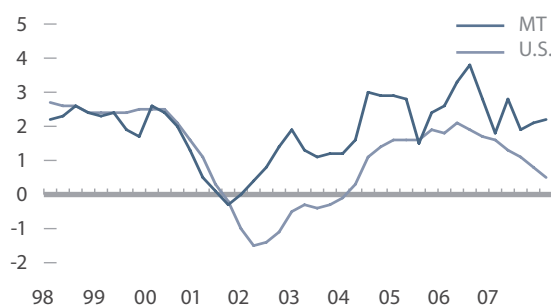
Personal Income Per Capita Cumulative Growth 1997-2007 **66.1%** **Rank: 5**



Absolute Domestic Migration Cumulative 1998-2007 **28,382** **Rank: 21**



Non-Farm Payroll Employment Cumulative Growth 1997-2007 **21.2%** **Rank: 7**



Economic Outlook Rank (1=best 50=worst)

A forecast based on a state's standing (equally weighted average) in the 15 important state policy variables shown below. Data reflect state + local rates and revenues and any effect of federal deductibility.

Historical Ranking Comparison
2008 ECONOMIC OUTLOOK RANK

32

Variable	Data	Rank
Top Marginal Personal Income Tax Rate	4.49%	14
Top Marginal Corporate Income Tax Rate	6.75%	21
Personal Income Tax Progressivity (change in tax liability per \$1,000 of income)	\$5.68	20
Property Tax Burden (per \$1,000 of personal income)	\$37.26	35
Sales Tax Burden (per \$1,000 of personal income)	\$0.00	1
Remaining Tax Burden (per \$1,000 of personal income)	\$26.90	45
Estate/Inheritance Tax Levied?	No	1
Recently Legislated Tax Changes (2007 & 2008, per \$1,000 of personal income)	\$0.45	35
Debt Service as a Share of Tax Revenue	7.0%	19
Public Employees Per 10,000 of Population (full-time equivalent)	584.1	33
State Liability System Survey (tort litigation treatment, judicial impartiality, etc.)	57.3	38
State Minimum Wage (federal floor is \$6.55)	\$6.55	1
Average Workers' Compensation Costs (per \$100 of payroll)	\$3.50	49
Right-to-Work State? (option to join or support a union)	No	50
Number of Tax or Expenditure Limits (0= least/worst, 3=most/best)	1	13