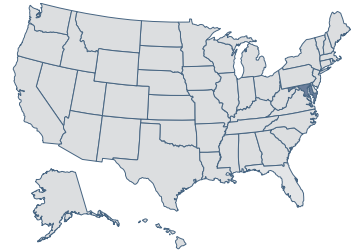


Maryland

17 Economic Performance
Rank: 2009

28 Economic Outlook
Rank: 2009



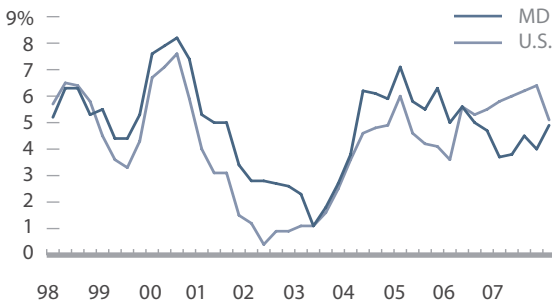
Economic Performance Rank (1=best 50=worst)

A historical measure based on a state's performance (equally weighted average) in the three important performance variables shown below. These variables are highly influenced by state policy.

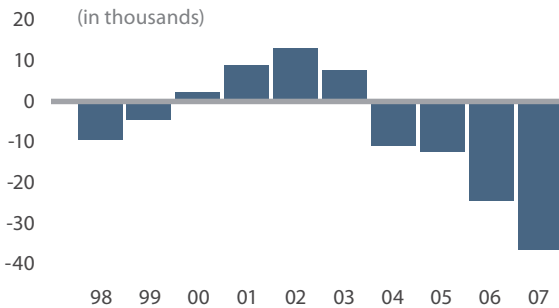
Economic Outlook Rank (1=best 50=worst)

A forecast based on a state's standing (equally weighted average) in the 15 important state policy variables shown below. Data reflect state + local rates and revenues and any effect of federal deductibility.

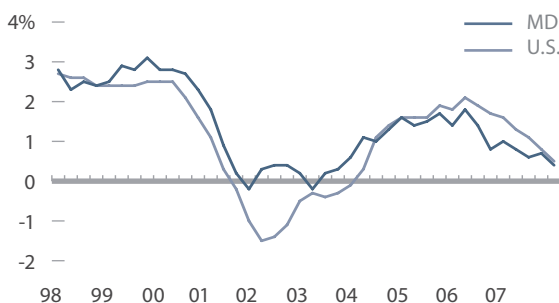
Personal Income Per Capita Cumulative Growth 1997-2007 **61.1%** **Rank: 9**



Absolute Domestic Migration Cumulative 1998-2007 **-65,868** **Rank: 39**



Non-Farm Payroll Employment Cumulative Growth 1997-2007 **15.0%** **Rank: 17**



Historical Ranking Comparison
2008 ECONOMIC OUTLOOK RANK **28**

Variable	Data	Rank
Top Marginal Personal Income Tax Rate	9.30%	47
Top Marginal Corporate Income Tax Rate	8.30%	32
Personal Income Tax Progressivity (change in tax liability per \$1,000 of income)	\$5.78	21
Property Tax Burden (per \$1,000 of personal income)	\$24.83	11
Sales Tax Burden (per \$1,000 of personal income)	\$10.98	6
Remaining Tax Burden (per \$1,000 of personal income)	\$23.08	35
Estate/Inheritance Tax Levied?	Yes	50
Recently Legislated Tax Changes (2007 & 2008, per \$1,000 of personal income)	\$4.29	49
Debt Service as a Share of Tax Revenue	5.7%	5
Public Employees Per 10,000 of Population (full-time equivalent)	534.0	18
State Liability System Survey (tort litigation treatment, judicial impartiality, etc.)	60.6	30
State Minimum Wage (federal floor is \$6.55)	\$6.55	1
Average Workers' Compensation Costs (per \$100 of payroll)	\$1.72	8
Right-to-Work State? (option to join or support a union)	No	50
Number of Tax or Expenditure Limits (0= least/worst, 3=most/best)	0	29