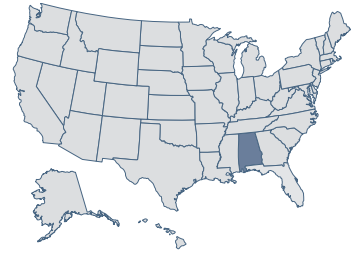


Alabama

26 Economic Performance
Rank: 2009

16 Economic Outlook
Rank: 2009



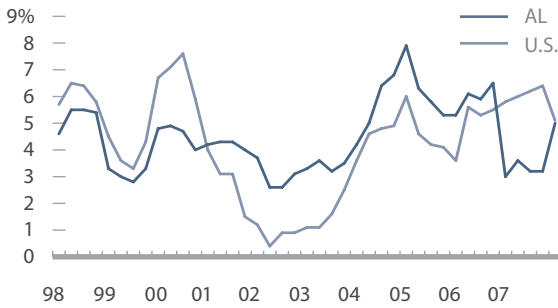
Economic Performance Rank (1=best 50=worst)

A historical measure based on a state's performance (equally weighted average) in the three important performance variables shown below. These variables are highly influenced by state policy.

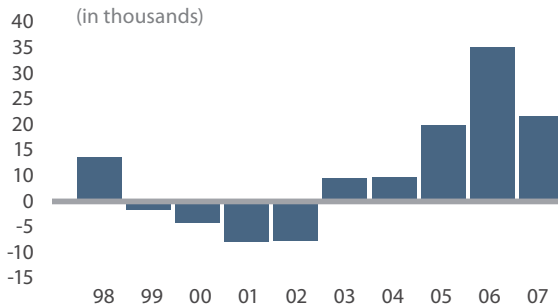
Economic Outlook Rank (1=best 50=worst)

A forecast based on a state's standing (equally weighted average) in the 15 important state policy variables shown below. Data reflect state + local rates and revenues and any effect of federal deductibility.

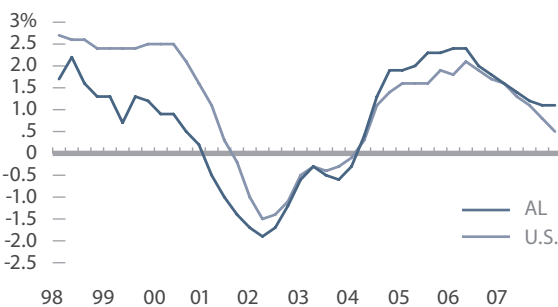
Personal Income Per Capita Cumulative Growth 1997-2007 **54.6%** **Rank: 20**



Absolute Domestic Migration Cumulative 1998-2007 **65,574** **Rank: 16**



Non-Farm Payroll Employment Cumulative Growth 1997-2007 **7.5%** **Rank: 39**



Historical Ranking Comparison
2008 ECONOMIC OUTLOOK RANK

15

Variable	Data	Rank
Top Marginal Personal Income Tax Rate	4.25%	12
Top Marginal Corporate Income Tax Rate	4.23%	5
Personal Income Tax Progressivity (change in tax liability per \$1,000 of income)	-\$1.51	1
Property Tax Burden (per \$1,000 of personal income)	\$14.00	1
Sales Tax Burden (per \$1,000 of personal income)	\$22.67	25
Remaining Tax Burden (per \$1,000 of personal income)	\$23.23	36
Estate/Inheritance Tax Levied?	No	1
Recently Legislated Tax Changes (2007 & 2008, per \$1,000 of personal income)	-\$0.21	24
Debt Service as a Share of Tax Revenue	6.9%	17
Public Employees Per 10,000 of Population (full-time equivalent)	614.5	40
State Liability System Survey (tort litigation treatment, judicial impartiality, etc.)	47.5	47
State Minimum Wage (federal floor is \$6.55)	\$6.55	1
Average Workers' Compensation Costs (per \$100 of payroll)	\$2.90	42
Right-to-Work State? (option to join or support a union)	Yes	1
Number of Tax or Expenditure Limits (0= least/worst, 3=most/best)	0	29