

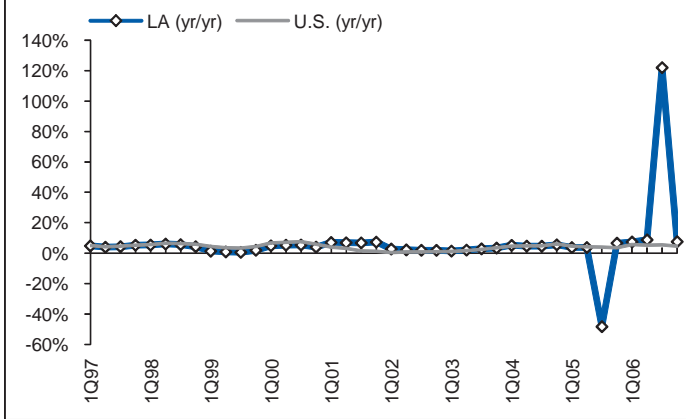


21 | Louisiana

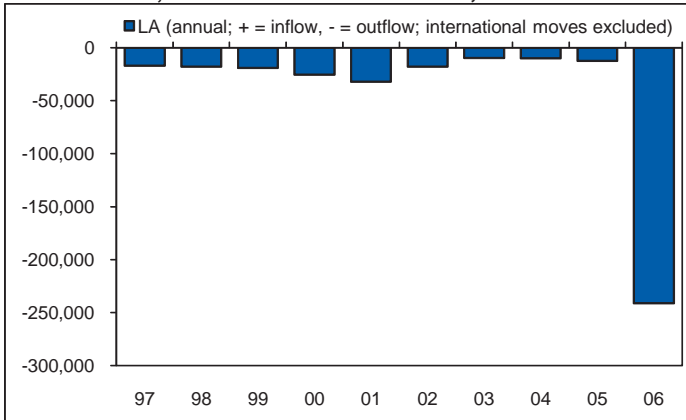
Economic Outlook Rank

Economic Performance Rank 43 (1=best; 50=worst): Based on the state's performance (equal-weighted average) in the three important performance variables shown below. These variables are highly influenced by state policy.

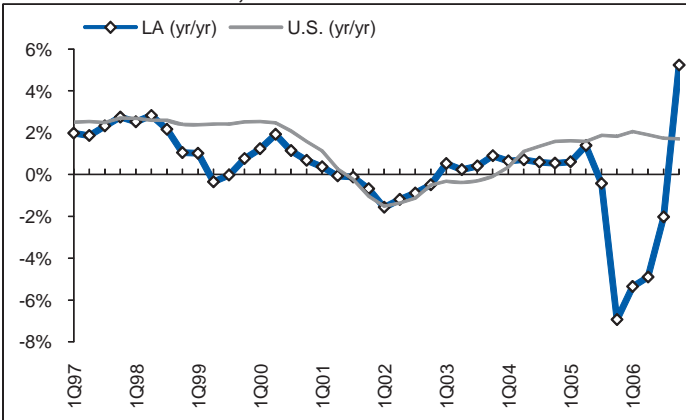
1) Personal Income Per Capita
Cumulative Growth, 1996-2006: 55.1% Rank: 11th



2) Absolute Domestic Migration, Cumulative, 1997-2006: -402,745 Rank: 46th



3) Non-farm Payroll Employment
Cumulative Growth, 1996-2006: 2.7% Rank: 49th



Economic Outlook Rank (1=best; 50=worst): A forward-looking forecast based on the state's standing (equal-weighted average) in the 16 important state policy variables shown below. Data reflect state+local rates and revenues and any effect of federal deductibility.

- 1) Top Marginal Personal Income Tax Rate:** **3.90%** Rank: **11th**
- 2) Top Marginal Corporate Income Tax Rate:** **5.20%** Rank: **12th**
- 3) Personal Income Tax Progressivity:** (change in tax liability per \$1,000 income) **\$8.35** Rank: **26th**
- 4) Property Tax Burden:** (per \$1,000 of personal income) **\$19.04** Rank: **7th**
- 5) Sales Tax Burden:** (per \$1,000 of personal income) **\$44.84** Rank: **48th**
- 6) Remaining Tax Burden:** (per \$1,000 of personal income) **\$20.02** Rank: **29th**
- 7) Estate/Inheritance Tax Levied?:** **No** Rank: **1st**
- 8) Recent Legislated Tax Changes:** (2005 and 2006, per \$1,000 of personal income) **-\$0.24** Rank: **18th**
- 9) Debt Service as a % of Total Tax Revenue:** **10.3%** Rank: **37th**
- 10) Public Employees Per 10,000 of Population** (full-time equivalent): **643.2** Rank: **42nd**
- 11) State Liability System Survey:** (tort litigation treatment, judicial impartiality, etc.) **47.3** Rank: **48th**
- 12) State Minimum Wage:** (federal floor is \$5.85) **\$5.85** Rank: **1st**
- 13) Avg. Workers' Compensation Costs:** (per \$100 of payroll) **\$3.10** Rank: **40th**
- 14) Right-To-Work State?:** (optional joining or supporting of a union) **Yes** Rank: **1st**
- 15) Number of Tax Expenditure Limits:** (0=least/worst, 3=most/best) **2** Rank: **4th**
- 16) Education Freedom Index Score:** (vouchers, ease of private/home schooling, etc.) **1.84** Rank: **23rd**